



Information

# STUDENTS Guide

## Table des matières

Welcome to Nantes !.....	2
Prior to your arrival.....	4
I.1) Applying for your “Visa long séjour valant titre de séjour” (VLS-TS) via Campus France.....	4
I.2) Searching for an accomodation.....	5
All students are responsible for finding their own housing.....	5
What is a guarantor ?.....	5
I. 3) Paying the CVEC .....	8
I.4) Enrolling to ONIRIS .....	9
When arrived in Nantes .....	9
II.1) Public transportation .....	9
II.2) Buying a sim card.....	10
II.3) Opening a bank account .....	10
II.4) Getting your accommodation insurance .....	11
II.5) Getting your Civil liability insurance.....	11
II.6) Registering for healthcare Social Security.....	11
II.7) Validating your residence permit.....	13
II.8) Applying for CAF .....	14
II.9) Are you eligible for housing aid?.....	14
Budget.....	15
Student at ONIRIS .....	16
III.1) ONIRIS.....	16
III.2) Public transportation.....	17
III.3) University health service .....	22
III.4) Crous card / izly .....	23
III.5) Libraries.....	23
III.6) Student life .....	24
III.7) Learning french .....	24
Documents needed : The checklist !.....	25



# Welcome to Nantes !

This Student Guide serves to answer the most frequently asked questions, as well as to help you get situated both in Nantes, and in ONIRIS itself.



Nantes is a city in Western France, in Loire-Atlantique, on the Loire River, 50 km (31 mi) from the Atlantic coast. As the 6th largest city in France, the metropolitan region of Nantes consists of 24 municipalities spread over 523 km<sup>2</sup> (201 sq. miles) and over 630,000 inhabitants. It is number two in the country in terms of job growth, and was voted to head Eurocities, a network working to defend the interests of urban agglomerations before Europe's ruling bodies.

Nantes is a vibrant and dynamic city, with a long and rich history whose heritage is still visible today through its architecture. Art and culture thrive all year-round with a plethora of events for all ages and preferences.

Furthermore, it is an important university city which adds to the richness of the city's activities. Nantes' proximity to the Atlantic coast makes it the perfect spot for city life and quick escapades to the beach. And for those who want to visit the capitol, Paris is only 2 hours away by train !

In 2013, Nantes held the title of European Green Capital for its efforts to reduce air pollution and CO<sub>2</sub> emissions, for its high quality well-managed public transport system, for its biodiversity with 3,366 hectares of green spaces, and several Natura 2000 zones which guarantee a protection of nature in the area.

City of Nantes:

**310,000** residents

Nantes metropolitan area:

**630,000** residents

**No.1** CITY IN THE REGION

**6th** LARGEST CITY IN FRANCE

**7th** TOURIST DESTINATION IN FRANCE

NANTES,  
RANKED **5th** (out of  
44) AMONG FRENCH  
CITIES AS A GREAT  
PLACE TO LIVE  
AND  
STUDY (awarded  
by L'Etudiant  
magazine)

History, art, culture, research, economy, innovation, nature, gastronomy... Nantes is the place to be!

**PAYS DE  
LA LOIRE  
REGION,  
8th FRENCH  
REGION IN  
TERMS  
OF HOSTING  
foreign students  
(12,000 international  
students)**

Université de Nantes:

**37,000** students,  
including **4200** foreign students  
representing 140 different nationalities

**54**  
research units

**1 300**  
doctoral candidates

NB : Most of the informations you find in this document come from CampusFrance website :

<https://www.campusfrance.org/en>

## Prior to your arrival

### I.1) Applying for your “Visa long séjour valant titre de séjour” (VLS-TS) via Campus France

The VLS-TS student visa allows you to pursue studies in France for a period of four months to one year. It must be validated within 3 months of your arrival in France. If you would like to continue your studies after it expires, you may apply for a multi-annual residence permit (carte de séjour pluriannuelle).

#### HOW TO OBTAIN A VLS-TS STUDENT (VLS-TS "ÉTUDIANT") VISA?

If you live in one of the 51 countries subject to the "Études en France" ("Studies in France") procedure and you need a visa to come study in France, you must first apply to enrol in a higher education institution through the platform "Études en France". Your visa application will be automatically sent to the French consular authorities of your home country through the platform.

The "Etudes en France" procedure involves students residing in one of the following 51 countries:

Algeria, Argentina, Benin, Brazil, Burkina Faso, Burundi, Cameroon, Chile, China, Colombia, Comoros, the Republic of the Congo, South Korea, Ivory Coast, Egypt, United States, Gabon, Ghana, Guinea, Haïti, India, Indonesia, Iran, Japan, Kuwait, Lebanon, Madagascar, Mali, Morocco, Mauritius, Mauritania, Mexico, Niger, Nigeria, Peru, Qatar, Senegal, Democratic Republic of Congo, Russia, Saudi Arabia, Senegal, Singapore, South Africa, Taiwan, Tchad, Togo, Tunisia, Turkey, United Arab Emirates, United Kingdom and Vietnam.

If you do not live in one of these countries and you need a visa to come study in France, please contact the French consular authorities in your home country.

For more information, please consult :

<https://www.campusfrance.org/en/student-long-stay-visa>

If you want to know if you need a VISA, how to obtain it and what are the necessary documents according to your situation : [https://france-visas.gouv.fr/en\\_US/web/france-visas/ai-je-besoin-d-un-visa](https://france-visas.gouv.fr/en_US/web/france-visas/ai-je-besoin-d-un-visa)

Check this tutorial : <https://www.youtube.com/watch?v=o1idAK3UdtI>



For the VISA, documents you need depend on your nationality and your situation. Check this link for more informations :

[https://france-visas.gouv.fr/en\\_US/web/france-visas/ai-je-besoin-d-un-visa?p\\_p\\_id=NeedVisaApplication\\_WAR\\_fvfoportalvisasportlet&p\\_p\\_lifecycle=0&NeedVisaApplication\\_WAR\\_fvfoportalvisasportlet\\_implicitModel=true](https://france-visas.gouv.fr/en_US/web/france-visas/ai-je-besoin-d-un-visa?p_p_id=NeedVisaApplication_WAR_fvfoportalvisasportlet&p_p_lifecycle=0&NeedVisaApplication_WAR_fvfoportalvisasportlet_implicitModel=true)

To validate your resident permit :

- information on your visa
- your home address in France
- a bank card to pay online.

## I.2) Searching for an accomodation

**All students are responsible for finding their own housing.**



Before arrival in France, it is important knowing the french administrative peculiarities regarding housing and gathering your documentation :

- Your ID card,
- Your residency permit (e.g., VLS-TS) if you are in France on a nonresident visa,
- Your student card or proof of enrollment for the current year,
- A letter from your guarantor and proof of the guarantor's identity.

When you arrive in France an accommodation insurance certificate will be required (check the III.)). Moreover you will have to pay your rent for the 1st month and a security deposit which is in general the same price as the rent for a month, so be careful to have the money ! Thi deposit will give it back at the end of your contract if your accommodation is in a similar condition when you arrive.

### What is a guarantor ?

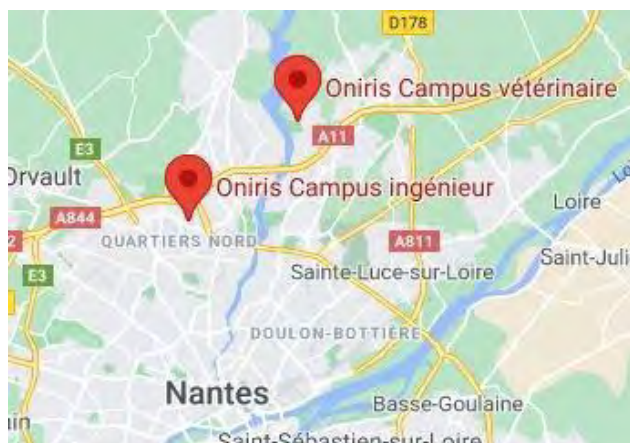
Providing a financial guarantor is a requirement in France for any type of housing situation. This guarantor must live within the European Union and will be held responsible for any unpaid rent. Some banks offer this service to university students. We recommend that you inquire with your bank to find out if they can act as your guarantor.

If you are between 18 and 30, the State may act as your financial guarantor with the VISALE visa which is a certificate that entitles the bearer to a security deposit.. You can apply before arriving in France. Please check this website for more information :

<https://www.campusfrance.org/en/VISALE-free-security-deposit-for-students>

You can also check this little tutorial : <https://youtu.be/RDoqrqSPOKs>

### Now, where to live during your stay :



It is important to search for housing not far away from the place where you will study, especially if you do not have any car. You can search in the north of Nantes, next to the tram line 2 :

In France, two basic forms of housing for students exist. :

- Rooms and apartments rented on the real-estate market
- Private apartments and shared rentals

Many students choose to rent an apartment. The ones who choose to live alone generally opt for a studio. The others can share a larger apartment together : a practice known as colocation.

You can go through a real estate agency but count on a fees agency of 300 to 500 euros in general.

You can try theses websites : <https://www.ouestfrance-immo.com/> and <https://www.seloger.com/immobilier/locations/immo-nantes-44/bien-appartement/>

If you choose to rent an apartment from an individual property owner (that is without going through an agency) you can check these two website :

<https://www.leboncoin.fr>  
<https://www.pap.fr/>  
[https://www.lokaviz.fr/rechercher-un-logement/n:39/affichage:liste?bHome=1&nbkmc=10&comm=nantes&commune\\_id=](https://www.lokaviz.fr/rechercher-un-logement/n:39/affichage:liste?bHome=1&nbkmc=10&comm=nantes&commune_id=)

To find a apartment to share try these ones:

<https://www.appartager.com/>  
<https://fr-fr.roomlala.com/>  
<https://www.immojeune.com/colocation.html>  
<https://www.lacartedescolocs.fr/colocations/fr/pays-de-la-loire/nantes>

- Living with a family or an elderly resident

International students wishing to refine their French and discover the the French culture often choose to live with a French family. It's a practical and economical solution: You get your own room in a house or apartment while taking part in French daily life and enjoying the comforts and facilities of a permanent home. Some families even offer students free or reduced rent in return for services such as childcare, help with homework, or language lessons.

Learn more of these solutions :

<https://cohomly.com/>

You may also want to consider intergenerational housing. This way, you can discover French culture and help seniors. Moreover, rents are modest and sometimes free.

Check these websites : <https://ensemble2generations.fr/> and <https://www.cohabilis.org/>

- Student residences and hostels

University residence halls managed by CROUS

The residences managed by France's regional centers for student services, known as CROUS (centres régionaux des œuvres universitaires et scolaires), are publicly owned and subsidized by the French government. Many students choose this option because the rent is low, the occupants are qualified for housing assistance from CAF and the buildings are close to the campus. However these rooms are hard to get, because demand far exceeds supply.

Check <https://trouverunlogement.lescrous.fr/>



- Student residences owned and managed by private companies

Privately owned and operated student buildings are a good alternative if you're not able to get a room through CROUS. The rents are often higher than in CROUS buildings, but they're competitive with other forms of student housing. The everyday advantages are many: group life, furnished rooms, internet, gym, laundry facilities, etc.

You have several options in Nantes :

<https://www.suitetudes.com/fr/logement-etudiant/nantes/oniris-ecole-nationale-veterinaire-agroalimentaire-et-de-l-alimentation/>

<https://www.nexity-studea.com/locations-etudiantes/nantes>

<https://www.fac-habitat.com/fr/residences-etudiantes/ville-17-nantes>

- Hostels for students and youth

Run by nonprofits (often religious organizations), most hostels offer lodging for young people between the ages of 18 and 25. Some are single-sex; others are mixed. Priority is usually given to young workers (engaged in apprenticeships, work-study, or practical training) or to students performing internships. But you can apply even if you're "just a student". Rooms are less expensive than in private student residences.

In Nantes, you can try this : <https://www.habitatjeunes.org/ville/nantes/>



### Our tips :

- For more informations on the procedures check <https://www.campusfrance.org/en/student-housing-france>
- Don't wait until you arrive in France to look for housing. Search your accommodation as soon as possible. Submit your applications remotely, whether for a room in a CROUS building, a hostel, or a private home.
- Beware of rents that seem too good to be true.
- Look for furnished rentals. You'll save on move-in expenses.
- Never send money remotely until you've signed a rental agreement and had direct exchanges with a property owner or agent.
- Avoid paying rent in advance.

If you don't find an accomodation before your arrival you can search one once you arrive and stay in these temporary housing :

- Nantes youth hostel, near the city center.

Address: La Manu, 2 place de la Manu, 44000 Nantes.

Contact: 02 40 29 29 20 or [nanteslamanu@hifrance.org](mailto:nanteslamanu@hifrance.org)

- Check these websites for hostels or bedrooms for rents by individuals :\_

<https://www.airbnb.fr/> (individuals), <https://www.booking.com/> (professionals), <https://fr-fr.roomlala.com/>



### I. 3) Paying the CVEC

Students admitted to a French institution of higher education must pay an annual fee known as the CVEC which helps to finance on-campus programs that enhance the student experience.

You can pay this fee before or after your arrival but the sooner the better because you must in order to be enrolled in school. The amount of the CVEC for the 2020/21 academic year is €100. This montant is reevaluated each year.

You have to register at : <https://www.messervices.etudiant.gouv.fr>



You will need these documents :

- Identity proof
- Proof of your registration

Go on “inscription” and then complete the information.

When it asks for your INE you need to click on “Je n’ai pas d'INE ” (I don’t have an INE).

Then continue to complete your information.

Then scan and attach the documents needed in your online profile : identity proof and proof of registration. If you don’t have one yet, attach a scanned copy of a sworn statement to state that you’re in the process of getting an admission. Here's an example :

Sample proof of registration (sworn statement) :

Je soussigné(e) Madame/Mademoiselle/Monsieur (prénom nom), demeurant au (adresse), atteste sur l'honneur avoir fait une demande d'inscription dans l'établissement (nom de l'établissement) pour la formation (nom de la formation) sur l'année universitaire 2018 - 2019.

Fait pour servir et valoir ce que de droit

(lieu), le (date)

Signature.

Then you will receive an automatically generated email.

To finalise your online registration, you just have to copy and paste the code received by email on the site.

Your account is now created. You will receive a confirmation email, you have to click on the link to create a password. You are then officially registered on the website.

And then go to <https://cvec.etudiant.gouv.fr/> and enter your email ID and your password that you just created.

Then choose your city and pay 100 euros for the year : you can do it online or by cash in a post office in France but it'll be longer to have the attestation.

You'll not have to pay if you're a social-based scholarship holder, asylum seeker, student with a refugee status or benefiting from subsidiary protection, but you still have to go to the website to have your exoneration certificate.

Then download your certificate which is mandatory to register at the university.

To register in ONIRIS, you can do it online : you'll have to enter the 12 digits from the CVEC attestation.

Or you can do it physically at your university, carrying a photocopy of this attestation.

To have all the informations visit this website : <https://www.campusfrance.org/en/10-things-you-need-to-know-about-the-student-and-campus-life-contribution-cvec> and watch this tutorial : <https://www.youtube.com/watch?v=0RlhjHIEK00>

## I.4) Enrolling to ONIRIS

Once the selection is made you will receive an email from the school explaining the steps to take to enroll in ONIRIS. Everything will be explained in this email so do not worry !



You will need your passport, CVEC certificate if you have been able to pay from your country of origin, ID photos, original diplomas and your civil liability insurance (it will be asked once you arrive in France,).

## When arrived in Nantes

### II.1) Public transportation

To go from the airport to the center of Nantes, you must take the bus called the “Navette” (the shuttle). To find it you can just follow the blue signs with a plane, you’ll arrive then to the bus. You’ll have to pay 9 euros to take it and then stop at “Hôtel Dieu” if you arrive before the august 29th, or at “Commerce” if you arrive after (there are works before).

If you arrive in Paris by plane, you can then go to Nantes by train, it’s only a 2-hour train ride. Then you can take the tram line 1 at “Gare nord - Jardin des Plantes” direction “François Mitterrand / Jamet” and stop at “Commerce” if you want to be in the center of Nantes.

Then it’s pretty urgent to go to the Tan, the public transportation system in Nantes. Here you can buy tickets to take the tramway and the bus in Nantes, you can pay with cash.

You really have to take some tickets at the beginning, waiting to buy an illimited card which is really important in Nantes to travel.

The address to buy tickets is : S.E.M.I.T.A.N - Information, 3 rue Bellier, 44000 NANTES, 02.40.44.44.44.

You can have more informations on <https://www.tan.fr/>

To buy an unlimited card you need to have a bank account in France, so you can buy it later, that’s why you have to take tickets for the 1st week.

You can then order the card online, or go to the SEMITAN. For more information on the prices check the paragraph “Budget”.

Then to move in Nantes it will be easier if you download an app to locate yourself and find your way easily.

You can try the app “Naoned Bus”, “Tan”, or “Zenbus”, which are all good apps for the transports in Nantes. You’ll just have to write where you are and where you want to go and then the app will tell you which tramway or bus to take.

However to use these apps you’ll need an internet connection outside, so you’ll have to buy a sim card. So maybe the first few days you will not be able to use these apps so you’ll have to find your way by yourself. You can find the plans on <https://www.tan.fr/>

## II.2) Buying a sim card

When you arrive in France it will be a lot easier for you to buy a sim card to have internet in the streets to for example use a GPS and find your way in the streets.

Also you will be able to use apps for the transports in Nantes, but also call people and send messages in France so it can be useful for the administration tasks to call your university, your bank etc.

To choose where you want to buy the sim card you have to compare the offers in the different operators.

The students who've been there before went a lot to Sosh, RedSFR, Orange, Bouygues Telecom... To compare the offers, look at the price but also how many hours you can call in a month, how many "quantities" of internet you have in a month : depending on what you do with it, you'll need between 5Go and 50Go. Also ask if you can call at the international level, some operators permit it for not an expensive price.

If you have a WiFi box in your apartment you will not need a lot of quantity but if you don't you'll need more, so go to the shop of one of the operators and ask them directly, they'll know how to help you and advise you. Compare the prices between the different offers too of course.

## II.3) Opening a bank account

It's not mandatory for you to have a bank account but it's strongly recommended, it's really useful and easier for you to pay insurance, electricity, telephone, rent, subscriptions (internet, transportation), etc. You can receive housing aid, MAN-IMAL financial aid, obtain a chequebook...

It's also easier to be reimbursed for healthcare expenses for example.

Also it permits you to have a payment card so you'll not have to carry a lot of cash with you.

Ask your bank in your home country if it has a partnership with a French bank as this would facilitate this process.

To open a French bank account you must provide the following documents:



- Photocopy of your student card
- Photocopy of your passport or I.D. card and visa
- Proof of address in France (bill, rent payment receipt...)

Don't forget to ask for your RIB (Banking information slip), it's really important to receive for example monetary assistance from school, or for your housing...

For more informations or for tutorials you can follow these links :

<https://www.campusfrance.org/en/getting-a-bank-account>

<https://youtu.be/INjtx3jy8ck>

To choose the bank, you have a lot of choices in France and you can compare the offers : the costs of the bank card, international transfers and cash withdrawals abroad may vary noticeably from one bank to another.

Few examples of banks our students choose : BNP, Crédit Mutuel, Crédit Agricole, La Banque Postale, Banque Populaire...

When you'll have a payment card it's really useful to pay in most shops. There are also many ATMs in town.

## II.4) Getting your accommodation insurance

Insurance covering fire, flood damage and personal liability is a **requirement** in France for any type of housing situation. When you enter your accommodation you have to ask for the housing certificate or a copy of the rental agreement. Moreover you have to search for housing insurance if you do not have one.

This insurance must be taken with a French Insurance Company, possibly online, or in an insurance agency upon arrival. There are many choices like MAIF, MAAF, AXA, Crédit Mutuel... Some banks can do it too so ask yours before searching others.

For example : <https://www.assurances-etudiants.com/en> (given by the CROUS).



The documents needed :

- a copy of your passport or ID card and visa
- your RIB
- the attestation of housing in France (you can ask for it to the person who's locating to you the apartment after your move)

To choose which insurance company you want, you can compare it on some websites like :

<https://reassurez-moi.fr/comparateur-assurance-habitation>

## II.5) Getting your Civil liability insurance

No matter your status, Civil Liability Coverage is required by French law and is often included in private health and housing insurance. It's an insurance to help to refund the damages caused by you to another person, non intentionally. It is mandatory for your inscription.

However, it is your responsibility to ensure that your coverage includes Civil Liability. You can ask for this specific insurance with the accomodation one or via your bank.

## II.6) Registering for healthcare Social Security

As soon as possible after your academic registration, you must register for social security. This is mandatory and free of charge.

The subscription needs to be done only the first year, meaning that if you continue your studies in France, it does not need to be redone.

You have to register online on <https://etudiant-etranger.ameli.fr/>

To register you need :



- passport and visa
- university enrollment certificate or student card
- birth certificate with filiation, translated by a sworn translator



- residence permit OR OFII certificate
- your RIB

Then you can download all your final certificates and create your account on [ameli.fr](https://ameli.fr), and request your healthcare card (Carte Vitale).

If one day you go to a doctor in Nantes, you can then declare this doctor like your general practitioner on your account, you'll be better reimbursed for the following appointments.

<https://www.campusfrance.org/en/registering-to-social-security>

After receiving your health insurance card (called "Carte Vitale»), you will have to show it at every medical appointment you are going to. Your medical costs will then be covered at 70%.

If you wish to be covered at 100%, you have to subscribe to a complementary health insurance (called "Mutuelle") that would take in charge the remaining 30%.

The choice to subscribe to a complementary health insurance to top up the reimbursements of your medical expense is entirely up to you. It is not mandatory, but we do strongly recommend it.

It's up to you to complete the subscription process. Start by asking for a quote, and compare the offers. You can do so with:

- Traditional student healthcare mutuals
- Insurance companies
- Banks

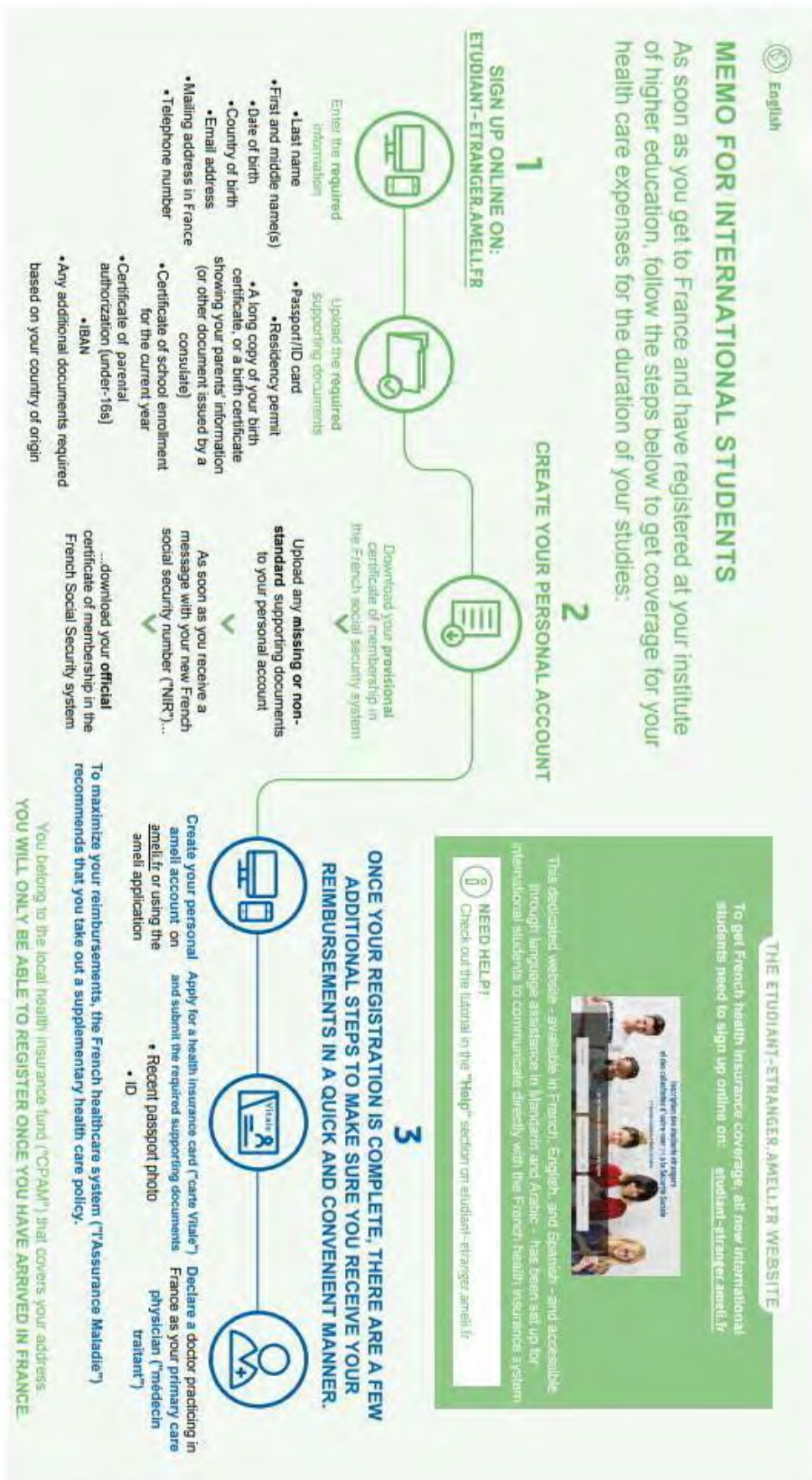
Campus France advise: Check that the health insurance you choose offers a civil liability valid for both your private and student life. That way, you'll be covered on your place of study and the place of your internship student life.

That way, you'll be covered on your place of study and the place of your internship

Check this tutorial : <https://www.youtube.com/watch?v=LMS2uL-DIs>

## II.7) Validating your residence permit

You have to validate it within 3 months on :



<https://administration-etrangers-en-france.interieur.gouv.fr/particuliers/#/>

We recommend you to do it immediately when you arrive.



To validate it, you need :

- a valid email address
- information on your visa
- your date of arrival in France
- your home address in France
- a bank card to payonline.

## II.8) Applying for CAF

Once you have found accommodation, have been enrolled in the social security system and have opened a bank account, you can apply for housing assistance (called “CAF”).

Every student can apply for housing benefits based on their personal resources and the rent they pay.

You can apply online here: <https://www.caf.fr/allocataires/droits-et-prestations/s-informer-sur-les-aides/logement-et-cadre-de-vie/les-aides-personnelles-au-logement?active=tab1>



You need some documents to apply for this assistance :

- your RIB
- your birth certificate with filiation translated by a sworn translator
- your passport and your visa

## II.9) Are you eligible for housing aid?

If you are a student paying rent, you can benefit from housing aid from the CAF (Caisse d’Allocations Familiales). This aid is calculated according to your income. You can check this once your accommodation is found.

To benefit from this aid you can either fill out a form directly on the CAF website.

Estimate the amount of your aid :

<https://wwwd.caf.fr/wps/portal/cafr/aidesetservices/lesservicesenligne/estimervosdroits/lelogement#/stateaccueil>

## Budget

Accommodation, food, healthcare, transportation, entertainment... The cost of living in France can be fairly high, especially in Paris and the big cities like Nantes. It's better to prepare your budget to avoid unpleasant surprises when you move here. Pay attention, expenses of the first month are often higher with the tuition fees, the deposit for your accommodation...

### YOUR ACCOMMODATION BUDGET

These expenses depend a lot on your type of accommodation. In general, count between €400 and €600 per month with charges (current water, electricity, heating, internet subscription...).

### YOUR FOOD BUDGET

On average, the French dedicate about 300€/month to food expenses. Of course, this value varies depending on the city you are living in, if you go to university restaurants, and your personal habits.

Here are the average prices of a few base products:

- a baguette: 1 Euro;
- a croissant: 1.10 Euros;
- 1 kg of pasta: 1.50 Euros;
- 1 litre of milk: 1.20 Euros;
- 6 eggs: 1.50 Euros;
- a coffee in a bar or restaurant: 2 Euros;
- a meal in the university restaurant (RU): 3,25 euros
- a fast food meal: 7 Euros;
- a meal in a restaurant: 10 to 20 Euros;
- a sandwich from a bakery with a drink: 5 to 8 Euros.



#### Some tips to save money on your food budget :

- install applications like Phenix and To good to Go which help to reduce food waste and save money by buying cheaper up-to-date products
- Buy seasonal fruits and vegetables
- Make shopping lists
- Go to University Restaurants....

### YOUR HEALTHCARE BUDGET

In France, doctors are free to apply the prices they want. To stay in control of your healthcare budget, we recommend "conventionnés de secteur 1" (sector 1) doctors, who charge an amount that is partly reimbursed by Social Security. You will pay less and be better reimbursed. If you go to see a doctor at the university health center; check-ups are free.

### YOUR TRANSPORTATION BUDGET

If you live far from your host institute, your transportation budget can represent a significant part of your total budget. In Nantes, there are some specificities :

- The Tan network, that is the tram, is free every week-end.



- If you have found an accommodation a little far away from the school and you use the tram almost every day, you can choose an unlimited formula for 22,40€ per month if you are under 26 or 49,28€ if you are over. You will pay for ten month a year, two are free. With this formula you have access to all the trams and most of the bus in Nantes and you have a discount for the subscription for BiclooPlus, the self-service bikes in Nantes.
- If you use the tram only sometimes you can choose the tailor-made formula. With this one you pay reduced prices for transport and you pay only for the journeys made.
- Without any subscription : these are the prices :

1h Ticket	1,70€ (2,00€ if you pay in the bus/tram, in currency)
Booklet of ten 1h tickets	15,60€
Airport shuttle ticket	9,00€
24h ticket	5,60€

For more information on the transportation in Nantes check this website : <https://www.tan.fr/>

## YOUR ENTERTAINMENT BUDGET

The price of entertainment and cultural activities varies considerably depending on the regions, days of the week... There's something for everyone and for every budget. You will often get discounts and special rates when you show your student card or if you are under 25. Contact the student office of ONIRIS to have more information on partnerships allowing you to have discounts. Here are some example to help you to have an idea of prices in Nantes :

- 1 cinema ticket for students : between 5 and 10 euros
- an unlimited subscription to the cinema: around 30 Euros per month;
- 1 discount entry for the swimming pool: between 1.50 and 3 Euros;
- 1 pocket book: between 5 and 10 Euros;
- 1 theatre ticket: from 10 Euros;
- 1 daily national paper: between 2 and 3 Euros.

For more informations about your monthly budget : <https://www.campusfrance.org/en/preparing-budget-student-France>

## Student at ONIRIS

### III.1) ONIRIS

Your studies will take place at Oniris' Site de la Chantrerie and Site de la Géraudière. Indeed, there are 2 schools Oniris in Nantes :

- The engineer campus : rue de la Géraudière, 44300 Nantes.
- The veterinary campus : 101 route de Gachet, 44300 Nantes.

Oniris is thus your Home Institution. It is a higher education and research institution of the Ministry of Agriculture and Food. There many topics can be studied including animal and public health, clinical, biomedical, food sciences and process engineering. It welcomes around 1,100 students training for veterinary doctors and engineers in agrifood and bioproduction.



### III.2) Public transportation

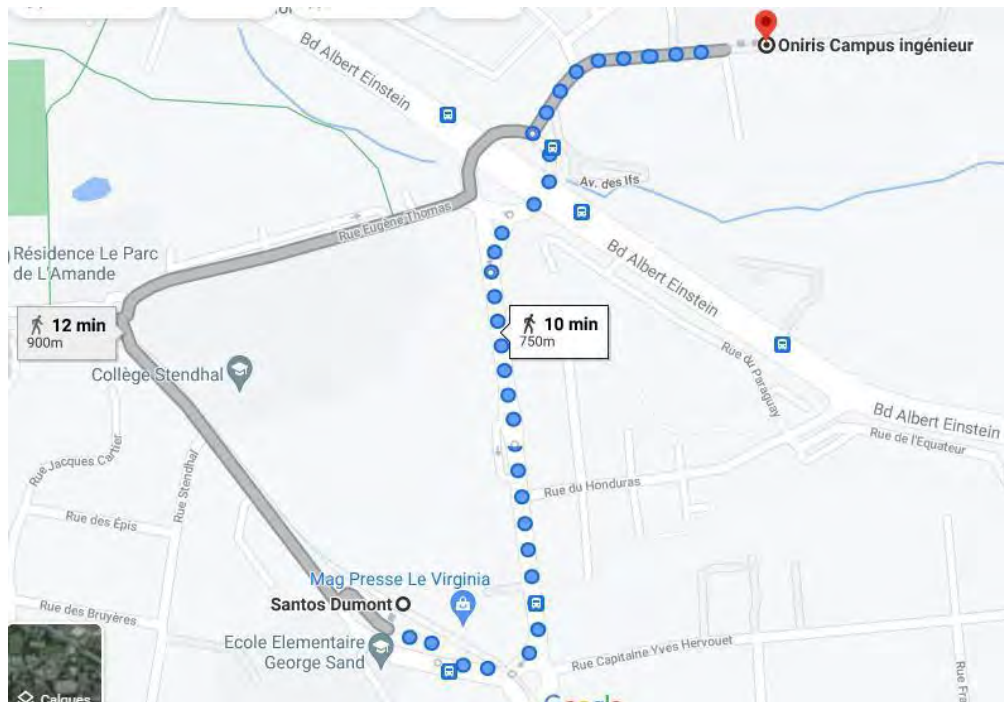
To go from the center of Nantes to the engineer campus :

From “*Commerce*”, you have 2 options :

Tram **2** → *Orvault Grand Val* : stop at *Santos Dumont*

Then walk 10 minutes : look at the map just under

- Go back from where the tram arrived until a roundabout
- Take to the left
- Follow the “Rue Santos Dumont” until the next roundabout
- Follow the “Rue de la Géraudière”. You’ll see the school on your left.

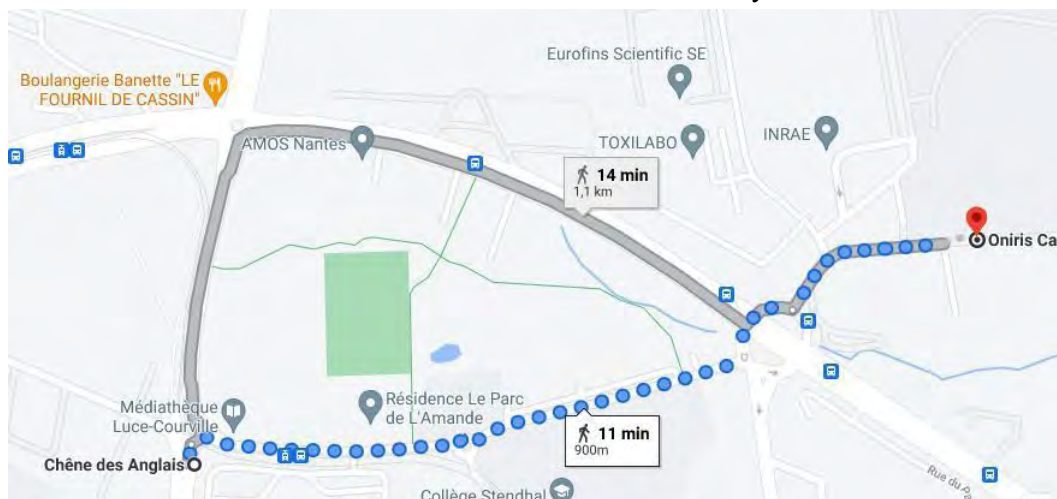


OR

From “Commerce” : bus **C2** → *Le Cardo* : stop at *Chêne des Anglais*.

Then walk 11 minutes :

- Take to the right at the roundabout
- Follow the “Rue Eugène Thomas” until the two next roundabouts
- Follow the “Rue de la Géraudière. You’ll see the school on your left then.





To find yourself in the campus :



To go from the center of Nantes to the veterinary campus :

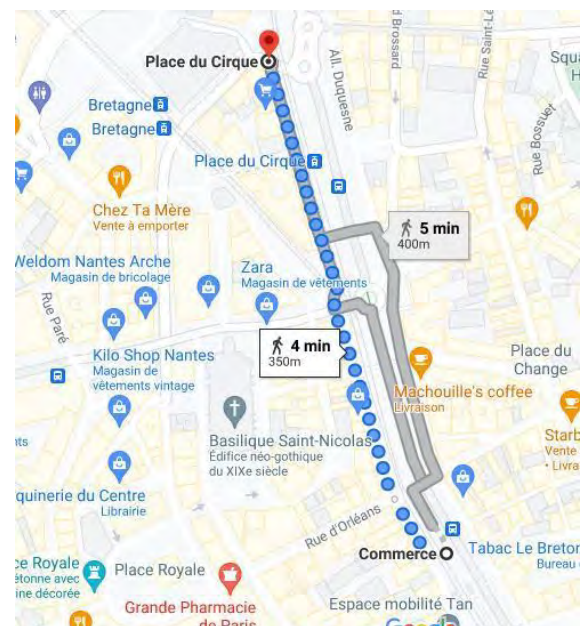
From “Place du Cirque” : bus **C6** → Chantrierie Grandes Ecoles To go to Place du Cirque from Commerce :

- Follow the “Cour des 50 otages” walking along the tram line **2** direction Orvault Grand Val or the **3** direction Marcel Paul.

Then you have 2 options :

**C6** : Stop at *Linot*

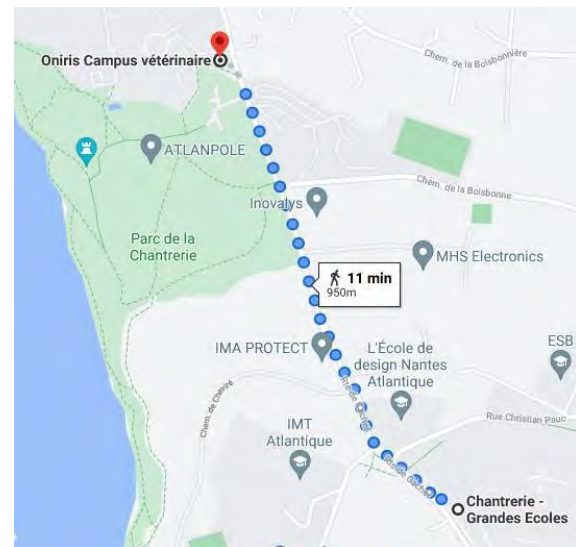
Take the bus **75** → Charbonneau : stop at *Ecole Vétérinaire*, and you'll be just next to the school.





But there are not a lot of bus 75 in a day so if you prefer you can stop at *Chantrerie Grandes Ecoles* with the **C6** (the terminus) Then walk 11 minutes:

- Follow the “Route de Gachet”. You’ll see a big park on your left called “parc de la Chantrerie”, and after this park you’ll see the school on your left.



To find yourself in the campus :

## Site de la Chantrerie



### GROUPE 1

#### 1er ETAGE

- DIRECTION
- SECRÉTARIAT GÉNÉRAL
- COMMUNICATION
- SERVICE QUALITÉ
- RESSOURCES HUMAINES
- ACHATS MARCHÉS
- SERVICES BUDGÉTAIRE
- SERVICES FINANCIER et COMPTABLE
- SALLE DES CONSEILS – SALLE 112

#### RDC HAUT

- AMPHITHÉÂTRE D'HONNEUR
- HALL D'HONNEUR
- ACCUEIL STANDARD
- SERVICES COURRIER
- HYGIÈNE SECURITÉ
- MEDECIN DU PERSONNEL
- REGIE DES ANALYSES
- RELATIONS INTERNATIONALES
- BUREAU SYNDICATS
- ASSOCIATION AONIRIS
- DIRECTION RECHERCHE ET ETUDES DOCTORALES
- SALLE 103

#### AILE DROITE

- SERVICE FORMATIONS VÉTÉRINAIRES
- AMPHITHÉÂTRE GODFRAIN

#### RDC BAS

- CENTRE DOCUMENTATION
- REPROGRAPHIE
- SERVEUR AUTOCOM
- ARCHIVES

### GROUPE 1bis

- FOYER DES ÉLÈVES
- RESTAURANT UNIVERSITAIRE

### GROUPE 2

#### AILE A

##### RDC

- ZOOTECHNIE
- BIOEPAR (UMR/INRA)

##### 1er ETAGE

- NUTRITION ENDOCRINOLOGIE NP3

##### 2ème ETAGE

- ANATOMIE PATHOLOGIQUE
- LHA

#### AILE B

##### RDC

- PHYSIOLOGIE
- IECM (USC/INRA)

##### 1er ETAGE

- LDH VET

##### 2ème ETAGE

- PHARMACOLOGIE TOXICOLOGIE
- CAPAE OUEST

#### AILE C

##### RDC BAS

- LABERCA (UMR/INRA)

##### RDC HAUT

- PLATEAU BIOMOL
- AMPHITHÉÂTRE G2 S
- AMPHITHÉÂTRE G2 N

#### EXTENSION

##### RDC

- SALLE DE TRAVAUX PRATIQUES

##### 1er ETAGE

- SALLE DE TRAVAUX DIRIGÉS

##### 2ème ETAGE

- PARASITOLOGIE
- GRANDS ANIMAUX

##### 3ème ETAGE

- PANTHER (UMR/INRA)

### GROUPE 3

#### HALL DES CLINIQUES

- PHARMACIE CENTRALE
- LABORATOIRE CENTRAL
- CLINIQUE COULOIR DROITE

##### RDC

- ANIMAUX ESPÈCES INHABITUELLES

##### 1er ETAGE

- PATHOLOGIE REPRODUCTION
- MÉDECINE INTERNE

##### 2ème ETAGE

- MÉDECINE DES ANIMAUX D'ÉLEVAGE
- DERMATOLOGIE
- PARASITOLOGIE MYCOLOGIE

#### CLINIQUE COULOIR GAUCHE

##### RDC

- IMAGERIE MÉDICALE
- AMPHITHÉÂTRE G3

##### 1er ETAGE

- CHIRURGIE ANESTHÉSIOLOGIE

#### ESPACE ACCUEIL (consultations)

### GROUPE 4

##### RDC

- URGENCES
- AMPHITHÉÂTRE G4

##### 1er ETAGE

- ANATOMIE COMPAREE
- BUREAU LANGUES
- AQUACULTURE
- SALLES ENS. VIRTUELLES

### GROUPE 5

##### RDC

- ACCUEIL

##### 1er ETAGE

- MALADIE RÉGLEMENTÉES
- ZOONOSES
- HYGIÈNE ET QUALITÉ DES ALIMENTS
- SECALIM (UMR/INRA)
- MICROBIOLOGIE

### GROUPE 6

- SERVICES TECHNIQUES
- LINGERIE

### GROUPE 7

- SERVICES INFORMATIQUE
- SAPREC

### GROUPE 8

- CENTRE BOISBONNE

### GROUPE 9

- FAUNE SAUVAGE

### GROUPE 10

- HALLE D'AQUACULTURE
- SALLE D'AUTOPSIE

### GROUPE 11

- CHIRURGIE EXPÉRIMENTALE

To move between the 2 campus :

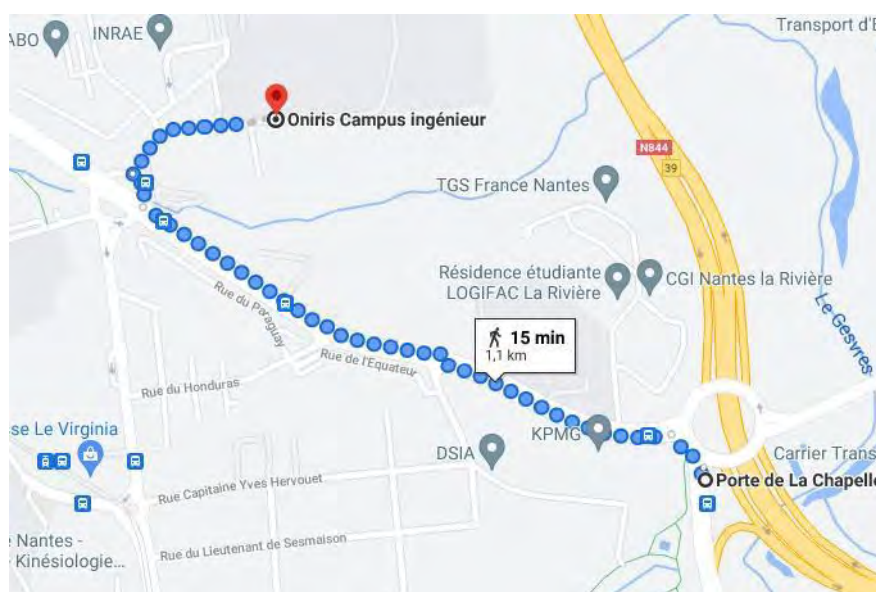
From the veterinary campus : From the bus stop **75** *Ecole Vétérinaire*

Bus **75** → Facultés : stop at *Porte de la Chapelle*

Walk 15 minutes :

- Take left to the roundabout
- Follow the “Boulevard Albert Einstein” until the 3rd roundabout
- Go to the right
- Follow the “Rue de la Géraudière” and you’ll see the school on the left.

From the engineer campus : same but in the opposite direction, so walk to the bus stop “Porte de la Chapelle” and take the bus **75** direction “Charbonneau” and stop at “Ecole Vétérinaire”.

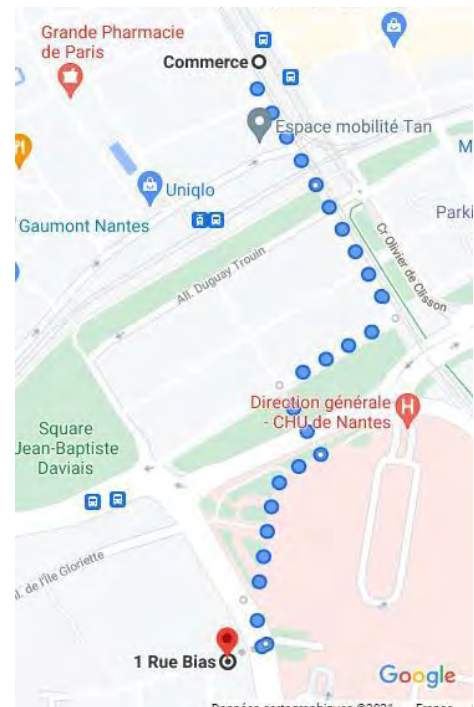


Sometimes you will also have to work in the medicine campus : 1 rue Gaston Veil, 44000 Nantes

To go from “Commerce” (center of Nantes) to the medicine campus :

Walk 8 minutes

- Follow the “Allée Cassard” and the “Cour Olivier de Clisson” until you arrive to a big road with big roundabouts and you’ll see here the CHU (Universitary Hospital Center),
- Take to the right following the “Boulevard Jean Philippet” until the next roundabout
- Go to the left in the “Rue Gaston Veil”. Here you’ll see the University of Nantes on your left, and if you continue there will be the “Amphitéatre Kerneïs” on your left, where there will be some of your classes.  
The address is 1 rue Bias.



### III.3) University health service

The student health center is called SUMPPS.

It's located at 110, boulevard Michelet 44300 Nantes.

You can call for more informations at the +33 (0)2 40 37 10 50

It's open from Monday to Friday, 8:30am to 12:30am and 1:30pm to 5:30pm.

The Department of Preventive Medicine and Health Promotion (SUMPPS) offers free services: nursing, medical, gynaecological and social services, nutrition and relaxation therapy, smoking cessation, counselling and first aid training.

Each new student receives a preventive medical exam with a nurse. This check-up is mandatory in the first year.

Social workers provide information about your rights to social assistance (scholarships, loans, budget), housing, social protection, and other routine issues.

You can see a doctor at the SUMPPS if you have no primary physician for one of the following reasons : financial reasons, you are a foreign student, your primary physician is far away.

Remember to bring a proof of your social cover when you see the doctor.

Important: If you have complementary health insurance, or if you are covered by your parents' insurance, remember to bring your insurance card.



### III.4) Crous card / izly

This card is necessary to pay for meals anywhere in the CROUS restaurants, although you will also be able to pay by cash until you open a bank account.

These are all the university restaurants you have access : <https://www.crous-nantes.fr/restauration/carte-des-restaurants/>

This card can also be used to pay different CROUS services such as launderettes.

Your CROUS Card is free and financed by the Regional Council Pays de la Loire. It is important to keep it safe because it is personal and non-transferable. The student card is very valuable, please take care of it and above all remember to carry it with you at all times.



#### WARNING

Your CROUS card is also a payment card.

IF YOUR CROUS CARD IS LOST OR STOLEN, you will be charged for a new card (€10) but you will not lose your credit.

In the case of this event, you must first block your account via the CROUS website. This first step is extremely important as anybody who finds your card may use it. Secondly, inform the Registrar's office of your school who will ensure that your new card is issued.

### III.5) Libraries

As a student, you have access to different facilities at Oniris but also to different university services in Nantes.

In school libraries you can borrow and read scientific books and magazines, print, copy or scan documents.

These are the opening hours :

	Géraudière	Chantrerie
Teaching period	Monday to Thursday: 8:00 a.m. - 6:00 p.m. Friday: 8:00 a.m. - 5:30 p.m.	Monday to Friday : 8:30 a.m - 19:00 p.m.
During holidays	Monday to Friday : 9:00 a.m - 12:00 a.m. / 14:00 p.m.- 17:00 p.m.	Monday to Friday : 9:00 a.m - 12:15 a.m. / 13:15 p.m.- 17:00 p.m.

The 2020-2021 copying prices were €0.06 for a B&W copy and €0.20 for a colour one. You will have to use this website : <https://imprimer.oniris-nantes.fr>

Your login details will be sent to you at the start of the school year.

You also have access to all the university libraries of Nantes. To check the opening hours and have more informations : <https://bu.univ-nantes.fr/decouvrir-la-bu>

### III.6) Student life

Oniris is a school punctuated by student life. The numerous clubs allow the students on both sites, Chantrerie and Géraudière, to participate in many sports and activities : rugby, basketball, tennis, football, artistic activities.... Contact the BDE (Student's office) for more information.

Students can also take advantage of the sports offered by SUAPS (University Service for Physical and Sports Activities), for around 50 euros per year for 3 activities. More informations here :

<https://www.univ-nantes.fr/sepanouir-sur-les-campus/sport/les-activites-du-suaps>

Go out in Nantes :

Nantes is a beautiful city full of life. If you are a culture lover you can visit numerous museums, cinemas, theaters... So many beautiful places to see !

More informations here : <https://www.nantes-tourisme.com/en/see-do>

If you want to go out with friends, try the Bouffay District : restaurants, bars, music... the place to have great encounters !



### III.7) Learning french

Learning french :

- consult the Campus France site or the Français Langue Étrangère (french as a foreign language) centers and universities. <http://ecoledete.campusfrance.org>
- Try the Mooc. These are free online courses, different according to your level.
  - Living in France A1 : [www.fun-mooc.fr/courses/c...](http://www.fun-mooc.fr/courses/c...)
  - Living in France A2 : [www.fun-mooc.fr/courses/c...](http://www.fun-mooc.fr/courses/c...)
  - Living in France B1 : [www.fun-mooc.fr/courses/c...](http://www.fun-mooc.fr/courses/c...)
  - Studying in France : B1-B2 : [www.coursera.org/learn/et...](http://www.coursera.org/learn/et...)
  - French in university : <https://www.fun-mooc.fr/fr/cours/mooc2move/>
  - Working in France A2-B1 : <https://www.fun-mooc.fr/fr/cours/travailler-en-france-a2-b1/>
  - Some exercices and videos depending on your level : <https://apprendre.tv5monde.com/fr>

## Documents needed : The checklist !



To recap, there are all the documents required for the administrative procedures. Please ensure that all of the following documents are in your possession before the procedures.

For the VISA :

Documents you need depend on your nationality and your situation. Check this link for more informations :

[https://france-visas.gouv.fr/en\\_US/web/france-visas/ai-je-besoin-d-un-visa?p\\_p\\_id=NeedVisaApplication\\_WAR\\_fvfoportalvisasportlet&p\\_p\\_lifecycle=0&\\_NeedVisaApplication\\_WAR\\_fvfoportalvisasportlet\\_implicitModel=true](https://france-visas.gouv.fr/en_US/web/france-visas/ai-je-besoin-d-un-visa?p_p_id=NeedVisaApplication_WAR_fvfoportalvisasportlet&p_p_lifecycle=0&_NeedVisaApplication_WAR_fvfoportalvisasportlet_implicitModel=true)

To validate your resident permit :

- information on your visa
- your home address in France
- a bank card to pay online.

For the accommodation :

- Your ID card,
- Your residency permit (e.g., VLS-TS) if you are in France on a nonresident visa,
- Your student card or proof of enrollment for the current year,
- A letter from your guarantor and proof of the guarantor's identity.

For the Accomodation Insurance :

- Passport or ID card and visa
- RIB
- Attestation of housing in France (you can ask for it to the person who's locating to you the apartment)
- 

For the payment of the CVEC :

- Identity proof
- Proof of your registration

For the enrolling to ONIRIS :

- Proof of payment for the CVEC
- Passport
- Civil liability insurance
- ID photo
- Original diplomas

For the opening of a bank account :

- Student card

- Passport or I.D. card and visa
- Proof of address in France (bill, rent payment receipt...) For

the Social Security

- passport and visa
- university enrollment certificate or student card
- birth certificate with filiation, translated by a sworn translator
- RIB

For applying the CAF :

- RIB
- Birth certificate with filiation translated by a sworn translator
- Passport and visa

**PLEASE NOTE:  
EMERGENCIES**

**European Emergency Number: 112**

Nantes University Hospital (Centre Hospitalier  
Universitaire de Nantes)

1 place Alexis Ricordeau - 44000 NANTES

Tel: +33 (0)2 40 08 33 33

**POLICE: 18**

**FIRE FIGHTERS: 17**

**AMBULANCE (SAMU): 15**





Route de Gachet  
CS 40706  
44307 NANTES Cedex 3  
02 40 68 77 77

Rue de la Géraudière  
CS 82225  
44322 NANTES Cedex 3  
02 51 78 54 54

---



[www.oniris-nantes.fr](http://www.oniris-nantes.fr)



[oniris.nantes](https://www.facebook.com/oniris.nantes)



[@oniris\\_officiel](https://twitter.com/oniris_officiel)



[@onirisvetoagro](https://www.instagram.com/onirisvetoagro)



[oniris nantes](https://www.linkedin.com/company/oniris-nantes)